

Railway scales

for static weighing in precision class 

Weighing without compromises

Static combined railway-truck weighbridge KGW

Precision based on experience

Static railway scale made of pre-assembled concrete parts

"The classic model"

Approved concrete railway scales from Pfister Waagen Bilanciai

Your guarantee for high standard and low service life costs



eichfähig



PLANNING

You will benefit from our long years of successful experience in the field when selecting a suitable railway scale. We place priority on advising customers according to their individual needs. As such, our qualified personnel will devise a specialised solution for each customer drawn from our railway scale product range, geared to the particular requirements and on-site situation.

REALISATION

Mounting, commissioning, calibration and training are coordinated and performed by us according to a precisely fixed timetable. We hand over your calibrated railway scale with practical technical documentation and train your personnel on site.

QUALITY

Quality is a proof of expertise. For this reason, the maintenance of high standards is a matter of principle for us. The basis is an extensive measure of in-house production and an uncompromising quality assurance system. Pfister Waagen Bilanciai is of course certified to ISO 9001.

DP-link

Software to suit your needs


Our software house not only provides the guarantee of a modern selection of railway scale programmes. Easy operation and transparency simplify the handling of our programme packages for your operators with a high level of automation. Your railway scale may thus be easily integrated in your internal logistics system.



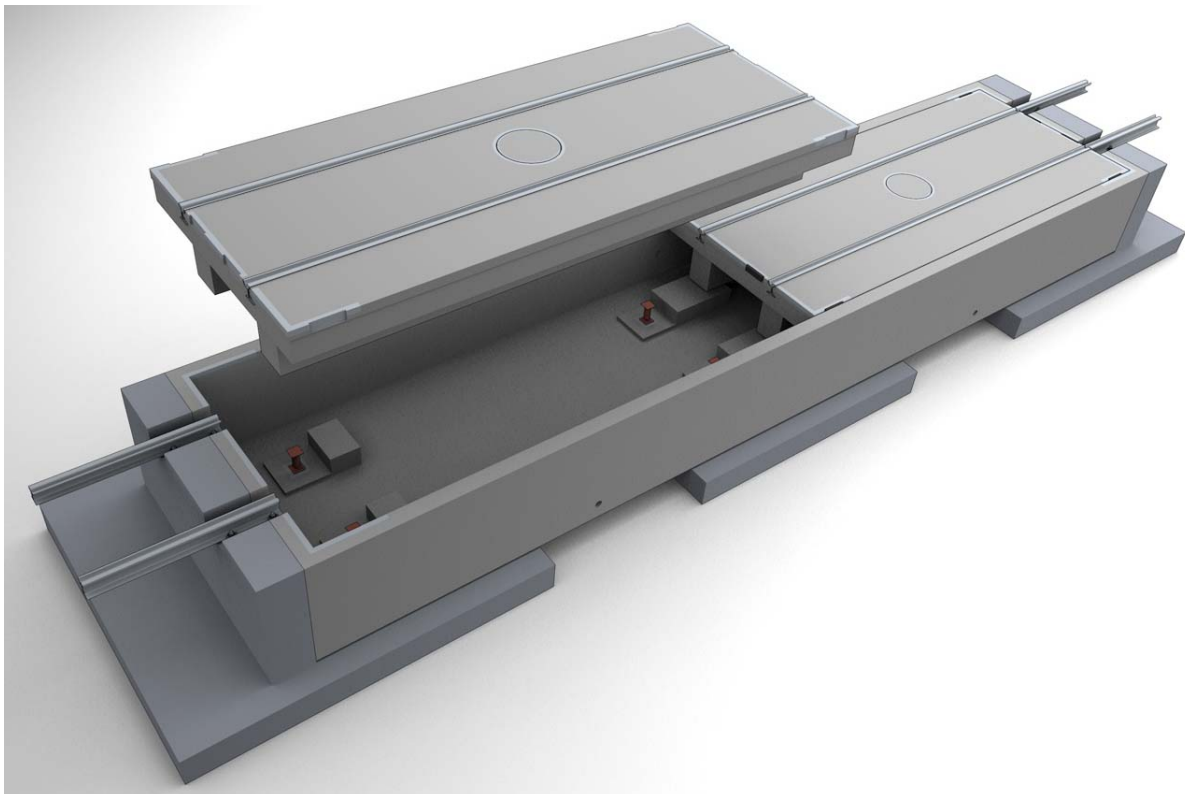
Our combined railway-truck weighbridge "KGW" in action

Weighing without compromises Static combined railway-truck weighbridge KGW

Whether trucks or wagons – with our **combined railway-truck weighbridge KGW** you can weigh both on a single weighing system.

- Commercially verifiable to precision class , complies with PTB (Fed. Physical-Technical Institute) and OIML recommendations as well as UIC and DIN standards
- Weighing ranges dependent on the bridge length. Weighing ranges up to 100 t for single weighbridges and up to 300 t for combined, multiple weighbridges (depending on number of bridges)
- Load capacity according to UIC 71 (International Union of Railways)
- Supply of high-quality prefabricated concrete (concrete grade C45/55) or on-site production of the concrete foundation according to our drawings
- Adaptable to all current rail profiles and rail gauges

We supply the **“the prefabricated concrete parts KGW”** system in two variants:
“North & West” variant with continuous foundation pit and bridge modules made of pre-fabricated concrete parts



- Standard-weighbridge-module lengths from 6 to 10 m, beyond these lengths different total bridge lengths can be realized by combining the modules (a maximum of 3 modules can be combined)
- Standard foundation pit modules lengths:
 - 1-piece foundation pit with a length of up to 14 m
 - 1 or 2-piece foundation pit possible from length of 14 – 16 m
 - 2 or more piece foundation pit from a length of 16 m

“South & East” variant with module pre-fabricated concrete foundation and bridge modules

- Standard-weighbridge and foundation module lengths from 5 to 10 m, beyond these lengths different total bridge lengths can be realized by combining the modules (a maximum of 3 modules can be combined)

Modular pre-fabricated concrete foundation comprising end pieces, middle pieces and side pieces

Assembly of a combined railway-truck weighbridge KGW with modular pre-fabricated foundation and bridge modules





Inclined cut on the rails at the gap to the bridge or

- Optional: our **recommendation for maximum durability and long service life:** to protect the rails and weighbridge structure: replaceable gap plates for impact-free traversing of the railway scales

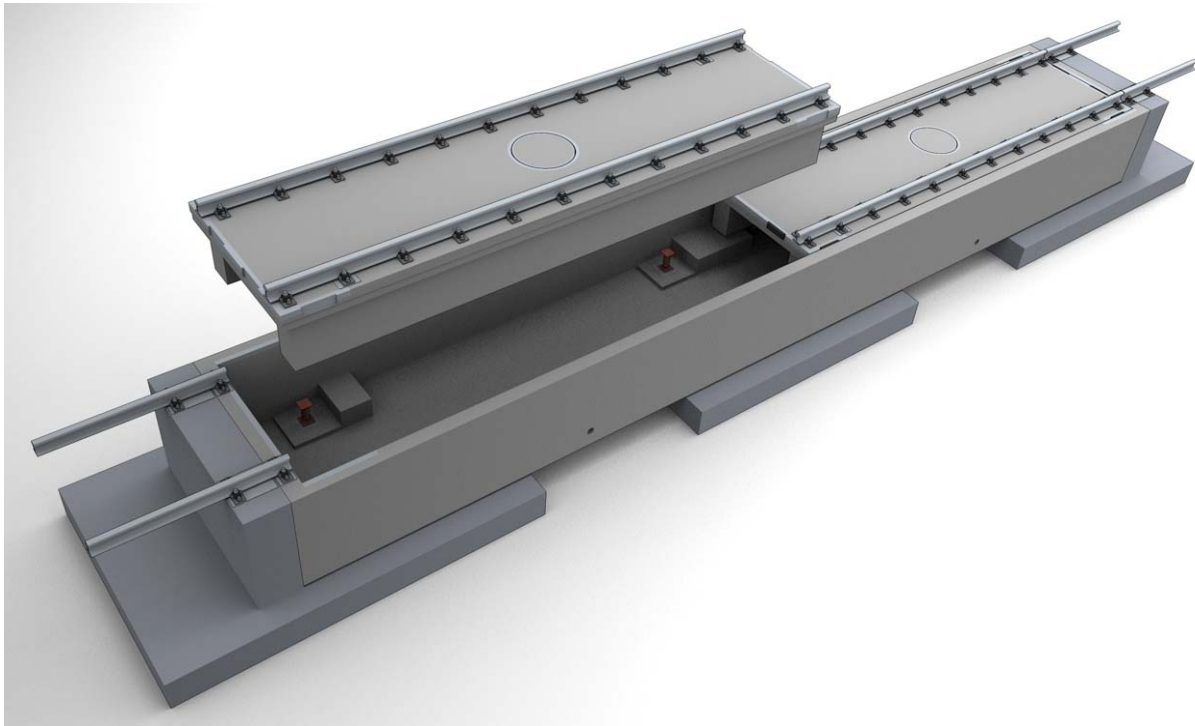
Robust – Durable - Precise

Precision based on experience - Static railway scale made of pre-assembled concrete parts „The classic model“

- Commercially verifiable to precision class $\textcircled{\text{III}}$, complies with PTB regulations and DIN standards
- Standard-weighbridge-modules lengths from 5 to 16 m, then various lengths can be realized by combination of different weighbridge modules
- Load capacity according to UIC 71
- Weighing capability depending on bridge lengths
- Supplying of superior ready-mix concrete parts or also on-site realisation of an in-situ foundation according to our plans
- Adaptable to all current rail profiles and rail gauges

We supply the **“the prefabricated concrete parts Classic Model”** in two variants:

“North & West” variant with continuous foundation pit and bridge modules made of pre-fabricated concrete parts



- Standard-weighbridge-module lengths from 6 to 10 m, beyond these lengths different total bridge lengths can be realized by combining the modules (a maximum of 3 modules can be combined)
- Standard foundation pit modules lengths:
 - 1-piece foundation pit with a length of up to 14 m
 - 1 or 2-piece foundation pit possible from length of 14 – 16 m
 - 2 or more piece foundation pit from a length of 16 m

“South & East” variant with module pre-fabricated concrete foundation and bridge modules

- Standard-weighbridge and foundation module lengths from 5 to 10 m, beyond these lengths different total bridge lengths can be realized by combining the modules (a maximum of 3 modules can be combined)

Modular pre-fabricated concrete foundation comprising end pieces, middle pieces and side pieces

Assembly of a classic static railway scale with modular pre-fabricated foundation and bridge modules





- Mitred rail cut at bridge gap or
- Optional: our **recommendation for maximum durability and long service life:** to protect the rails and scale structure: replaceable gap plates for impact-free traversing of the railway scales

Pfister Waagen Bilancai GmbH
Linker Kreuthweg 9, D-86444 Affing-Mühlhausen (Germany)
T: +49 (0) 82 07 / 9 58 99 -0 – F: +49 (0) 82 07 / 9 58 99 -29
E: sales@pfisterwaagen.de - Internet: www.pfisterwaagen.de

Product information
No. 1667d
05/2008