

## Low-Cost Truck Weighbridge The Mobile Model

### Mobil modular surface-mounted steel weighbridge

Shallow, only 31 cm high, compact modular weighbridge

Robot-welded steel bridges in dismantling, lacquered modules

Bridge module, run-on ramps and support plates completely in high quality steel

With short run-on ramps – only 3,40 m long!

Version with analogue or optional with modern, digital load cells

Rugged structure, yet may still be implemented flexibly

Easy assembly, no major on-site preparatory work required

Verifiable, approved throughout Europe, precision class III,  
CE-symbol, fulfils OIML recommendations, according to DIN 8119



Version with analogue or optional digital load cells

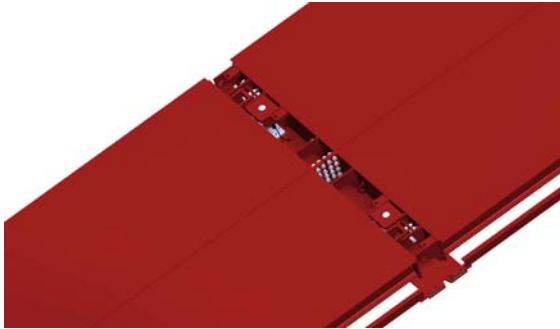
#### Ideal for:

- Easy, low-cost assembly
- Temporary use (agriculture, building trade etc.)
- Also, of course suitable for continuous implementation
- optional available with in situ concrete run-on ramps and in situ concrete foundation



May be easily transported and relocated due to modular design.

Easy access for maintenance and cleaning by removing the cross covers. The load cells are conveniently accessible from above.



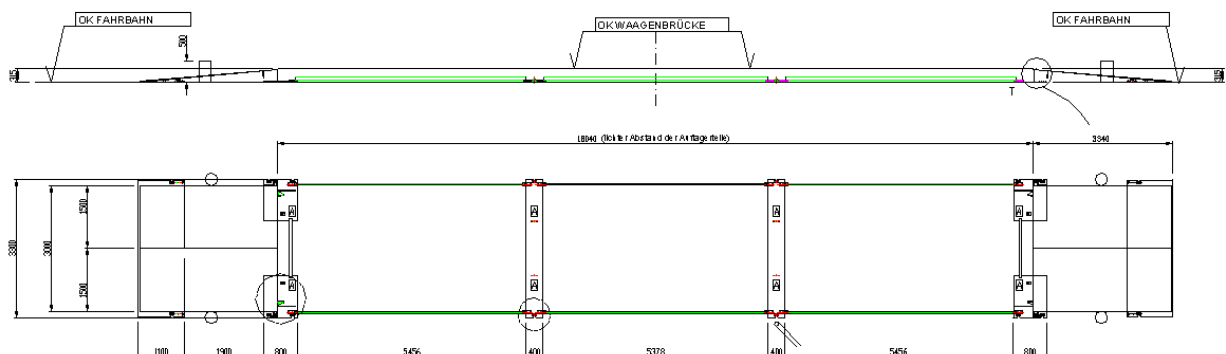
The scale may not be driven over from side to side !



## Technical Data

Standard bridge sizes	Weighing range (No. of load cells)	Load bearing capacity to DIN 8119	No. of modules (Module lengths)
L x W			
12 x 3 m	40,000 kg (6)	60,000 kg	2 (2 x 6 m)
18 x 3 m	60,000 kg (8)	60,000 kg	3 (3 x 6 m)

Example / dimensions for 18 m scale





## Options:

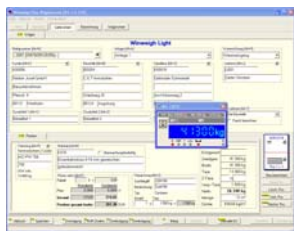
- Side guides as toppling protection, secured to the weighbridge



- Tilted mounting (up to 2,5 % longitudinal or transverse gradient)
- Assembly with in situ concrete run-on ramps and in situ concrete foundation
- Version with digital load cells



In addition we offer many extras such as weighing printers, ID systems, remote displays, radio remote, driver self service terminals, traffic light controls, barriers, video control etc.



With our “DWT” series digital weighing terminals and perfected software, the mobile model truck scale is transformed into a fully electronic, efficient weighing system.



-Technical data subject to modification without notice-

**Pfister Waagen Bilanciali GmbH**  
Linker Kreuthweg 9 – D-86444 Affing-Mühlhausen (Germany)  
T: +49 8207 95899-0 – F: +49 8207 95899-29  
E: sales@pfisterwaagen.de - Internet: www.pfisterwaagen.de

**Product information**  
**no. 1280c**  
04/2011