

Digital weighing terminal **DWT 410**

Commercially verifiable to precision class III

CE-tested, PTB-approved

Alphanumerical membrane keyboard with 18 keys (4-fold assignment), 6 of them operation-dependent function keys (soft keys)

Optional display with 16 or 32 mm digit height

Extensive operation and memory options

Choice of 6 user languages

Programmes available for platform scales or truck weighbridges

Dosing function for 1 material

Upgradable verifiable data memory MPP

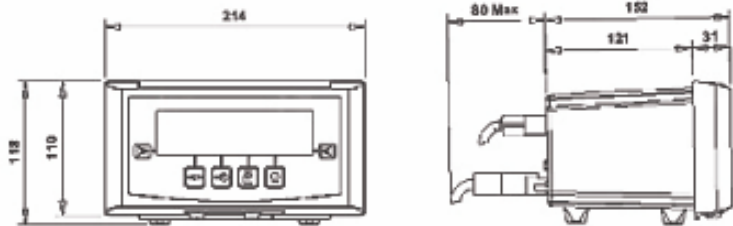
Analogue and digital load cells may be connected



General features, basic version for truck weighbridges

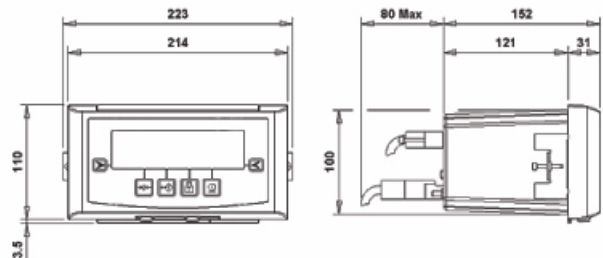
Housing: Impact-resistant ABS plastic
CE-approved, EMC-tested to EN 45501,
Irradiation-proof up to 10 V/m
Protection class IP 20; front protection class IP 65

Standard desktop mounting,
weight c. 2 kg
(see drawing)



Mounting options:

- additional holder for desktop mounting with 63° inclination angle, weight c. 2,5 kg
- additional holder for desktop or wall mounting, inclination angle adaptable with lateral screws, weight c. 2,5 kg (see picture on page 1)
- Rack version for integration in control cabinet, weight c. 2 kg (see drawing)
Extent for rack version mounting in control cabinet: 200 x 104 cm



User languages: German, English, French, Italian, Spanish, Portuguese

DWT 410 versions

ANALOGUE

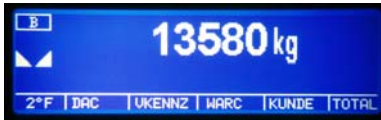
for connection to a scale with analogue load cells
(max. 12 load cells à 350 ohms or max. 24 load cells à 700 ohms with 6-conductor-system, for example CPR)

DIGITAL

for connection of a scale with digital load cells,
type CPD (max. 12 CPD load cells)

Data administration:

Weighing:



Gross / Tare / Net

or:

Multi-taring

Partial weighing function

First and second weighings

Variable limit values

Variable limit values

Ancillary module: dosing software with recipe administration; coarse / fine / trickle flow

Master data administration:



Products / Material (6 digits numeric code;
20 digits alpha-numeric description)

Customers (8 digits alpha-numeric code;
20 digits alpha-numeric description)

Vehicle registration (10 digits alpha-numeric description)

Other functions:

Zeroing:

per key

or PC interface RS 232

or via external input

Self-check:

built-in auto-diagnosis

Adjustment:

setting via linear function with adjustment 4 points
(0 – zero; 1.; 2.; 3. – end)

Printing:

variable display printouts

Technical features:

Alphanum. membrane keyboard

18 keys, with perceptible pressure point

Display

background-lit LCD display, 135 x 32 mm

Digit height of weight display

16 or 32 mm, optional

Mains connection:

85 - 265 V AC, 50/60 Hz, 40 W

Strain gauge load cell connection

with 6-wire system, 12 load cells, each 350 Ohms

Operating temperature:

-10°C to + 40°C

Storage temperature:

-20°C to + 70 °C

Relative humidity:

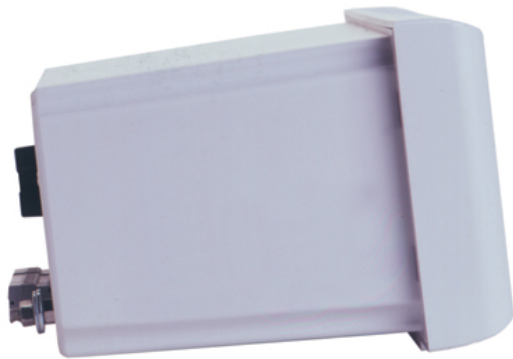
max. 85%, non-condensing

Protection class:

IP 20; Front: IP 65

Date / time:

built-in, battery-buffered clock module



Data interfaces

1 serial interface
1 serial interface
1 analog output
2 inputs
2 outputs

EIA RS 232
configurable EIA RS 232/422/485
0-10 V / 4 – 20 mA, alternatively 0 – 20 mA
opto-decoupled; 24 V DC, low active
potential-free relais contact, max 110V AC DC,
200 mA, e.g. configurable for traffic lights or
barrier control

Expansion options

Verifiable MPP hardware data memory, replaces alibi printer (permanent storage of weight values according to the applicable calibration regulations).
Storage capacity: 130.000 weighings (weight + tare). If memory is full, the oldest datas will be replaced by the new ones.

2 free slots (with plug and play-recognition), optionally:
- 2-fold serial interface EIA RS 232 or 422/485
- input/output card (4 inputs / 4 outputs)
- interface for BCD 24V logic
- interface for BCD 5V TTL logic

optional to mains connection 230 V: additional card for 12-24V DC voltage supply
(for use in vehicles)

- Subject to technical alterations -



DWT 410 with printer STB60

Pfister Waagen Bilanciali GmbH

Linker Kreuthweg 9, D-86444 Affing-Mühlhausen (Germany)
T: +49 (0) 82 07 / 9 58 99 -0 - F: +49 (0) 82 07 / 9 58 99 -29
E- sales@pfisterwaagen.de - Internet: www.pfisterwaagen.de

Product information
Nr. 680

08/2006